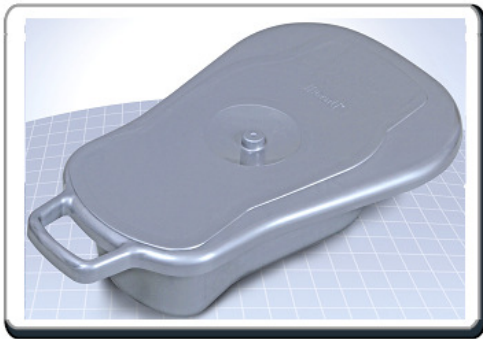


Bed Pan

A **bedpan** is used for the toileting of a bedridden patient in a health care facility. A bed pan can be used for both urinary and fecal discharge. Many diseases can confine a patient to bed, necessitating the use of bedpans; many patients may be confined to a bed temporarily as a result of a temporary illness, injury, or surgery, thereby necessitating the use of a bed pan.

Our Bedpans are constructed with good quality of plastic material.



Code: UR-51

- Easy fit cover for Hygiene and Odourless,
- In attractive designs made to be more comfortable and practical than traditional ones.
- It is made from tough, high grade plastic and is ergonomically designed for utmost human comfort, durable for repeated use, easy to clean and store and suitable for children & adults.
- Disposable / Available in packs of One, Two, Five & Seven nos.
- The design allow easy storage in minimum space.